

Fig. 1

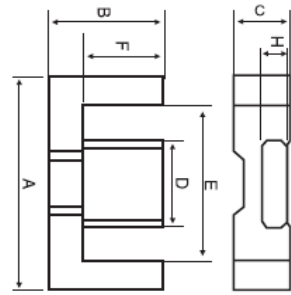


Fig. 2

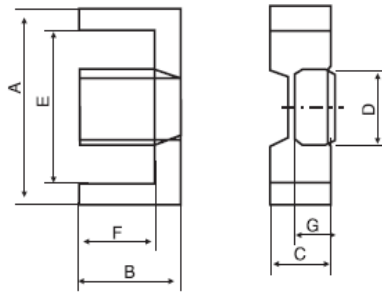


Fig. 3

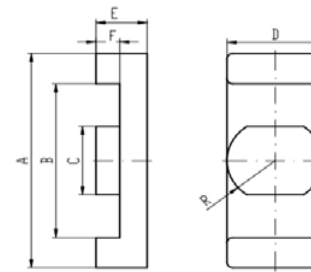


Fig. 4

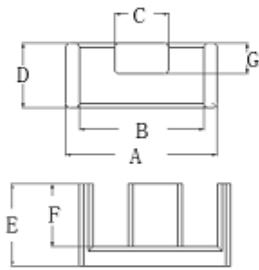


Fig. 5

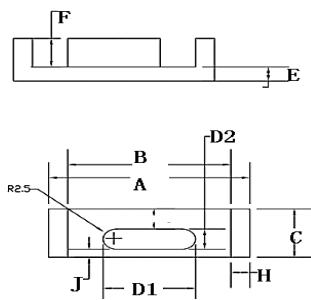


Fig. 6

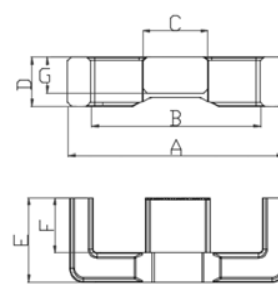


Fig. 7

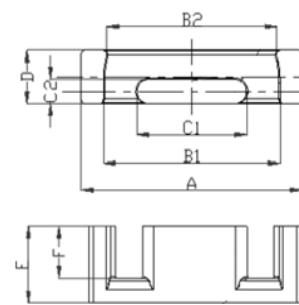


Fig. 8

EFD型

尺寸Dim 型号 Type	图形 Fig.	A (mm)	B (mm)	C (mm)	D (mm)	E (mm)	F (mm)	G(H) (mm)	C ₁ (mm ⁻¹)	Le (mm)	Ae (mm ²)	Ve (mm ³)
EFD5	1	5.65±0.15	3.2±0.1	1.60±0.1	1.40±0.1	2.65±0.1	2.60±0.15	4.3MIN	0.18	2.70	14.80	39.90
EFD6.45	6	6.45±0.2	5.3+0.3/-0.1	2.3±0.1	2.94±0.1	3.7±0.075	2.85±0.10	1.4±0.10	1.36	17.32	3.57	61.79
EFD8.3	1	8.3±0.3	4.35±0.2	3.2±0.2	2.9±0.15	6.0MIN	3.15±0.15	1.9±0.15	0.68	19.80	5.37	608.40
EPD9.9	1	9.9±0.3	4.25±0.2	3.0±0.2	4.0±0.15	7.0MIN	3.05±0.15	1.4±0.15	3.18	20.40	6.44	132.00
EFD12.1	2	12.1±0.25	4.9±0.15	4.4±0.2	4.3±0.15	9±0.25	3.35±0.15	2.4±0.15	0.2066	23.13	11.19	258.90
EFD12.7	1	12.75±0.25	6.85±0.15	6.0±0.15	1.85±0.10	3.30±0.15	4.55±0.15	9.0MIN	0.83	12.30	14.80	182.04
EFD12.7B	1	13.0±0.3	6.85±0.2	3.3±0.15	6.0±0.1	9.55MIN	4.55±0.15	1.85±0.1	2.4	29.00	12.00	348.00
EFD13	2	13.0±0.3	5.2±0.1	4.4±0.2	4.3±0.15	9.9+0.5	3.65±0.15	2.4±0.15	2.43	26.09	10.71	279.53
EFD13.2	1	13.2±0.3	6.85±0.15	3.3±0.2	6.0±0.15	9.7MIN	4.55±0.15	1.85±0.1	2.5021	29.25	11.69	341.94
EFD13.5	2	13.5±0.25	6.45±0.2	4.6±0.15	4.85±0.15	10.5±0.20	4.35+0.35/-0.1	2.05±0.15	2.3359	29.17	12.49	364.25
EFD14	1	14±0.3	10.95±0.15	3.7±0.2	4.0±0.15	12.0±0.2	9.2±0.2	2.0±0.1	5.96	46.40	9.52	441.90
EFD15	3	15.0±0.4	7.50±0.15	4.65±0.15	5.30±0.15	10.65MIN	5.50±0.25	2.4±0.15	2.35	33.28	14.12	469.90
EFD15C	2	15.0±0.4	5.50±0.15	5.0±0.2	5.1±0.15	10.8MIN	3.5±0.15	2.4±0.15	1.765	25.74	14.58	375.30
EFD16	1	16.4±0.3	7.55±0.2	4.8±0.2	6.1±0.15	12.85±0.35	5.45±0.15	2.45±0.15	234	36.00	15.37	553.70

EFD20	3	20.0±0.55	10.0±0.25	6.55±0.15	8.80±0.2	15.4±0.5	7.80±0.25	3.70±0.2	1.5	48.00	31.50	1465.00
EFD20	3	20.0±0.5	10.0±0.25	6.55±0.15	8.80±0.2	15.6MIN	7.80±0.35	3.70±0.2	1.5	48.00	31.50	1465.00
EFD20B	3	20.25±0.35	10.15±0.2	6.8+0.2/-0.15	8.9±0.25	15.9MIN	7.8+0.35/-0	3.6±0.2	1.788	47.51	26.57	1262.62
EFD20.5	2	20.5±0.6	10.1±0.2	6.6±0.25	8.85±0.25	16±0.6	7.8±0.2	3.6±0.2	1.619	48.20	29.78	1435.54
EFD22	2	22±0.55	11±0.15	6.65±0.15	8.9±0.2	17.4±0.45	8.7±0.25	3.6±0.15	1.86	51.99	27.95	1453.43
EFD25	2	25.0±0.65	12.5±0.15	9.10±0.2	11.3±0.2	18.7±0.6	9.30±0.25	5.20±0.15	1	57.00	58.00	3300.00
EFD25	3	25.0±0.65	12.5±0.15	8.90ref	11.3±0.2	18.7±0.6	9.30±0.25	5.20±0.15	1	57.00	58.00	3300.00
EFD25C	2	25.0±0.65	12.5±0.2	9.1±0.25	11.4±0.2	18.7±0.6	9.3±0.2	5.2±0.2	1	57.00	58.00	3300.00
EFD25.1	3	25.1±0.65	11±0.15	6.65±0.2	11.45±0.3	20.5±0.65	8.7±0.25	2.8±0.15	1.931	53.77	27.84	1497.07
EFD25.6	3	25.6±0.65	12.5±0.15	9.10±0.2	11.4±0.2	19.3MIN	9.30±0.25	5.20±0.15	1.1	56.73	51.25	2907.90
EFD27.3	3	27.3±0.7	11±0.15	6.65±0.2	11.8±0.3	22.7±0.65	8.7±0.25	2.8±0.15	1.9985	55.49	27.77	1540.72
EFD27.7/11.4/7.2	1	27.7±0.35	3.6±0.1	11.4±0.2	13.5±0.2	23.7±0.35	1.35±0.2	3.5±0.1	0.6	29.73	49.72	1463.60
EFD28	8	28±0.5	22.4±0.5 21.5±0.5	13.9±0.2 3.0±0.1	6.6±0.2	9.9±0.2	6.7±0.2	—	1.194	48.74	40.82	1989.53
EFD30	2	30.0±0.8	15.0±0.15	9.10±0.2	14.6±0.25	23.1min	11.2±0.3	4.90±0.15	0.98	68.00	69.00	4700.00
EFD30.6	7	30.6±0.8	23.9±0.7	9.2±0.25	6.8±0.25	11.7±0.15	7.6±0.2	5±0.15	1.2658	58.02	45.83	2658.99
EFD31.5	3	31.5±0.8	15.2±0.3	9.0±0.3	14.6±0.25	25MIN	11.4±0.2	4.90±0.2	0.98	57.40	58.70	3369.38
EFD37	5	37±0.45	30.36MIN	12±0.22	D1:17±0.2 D2:5.0±0.15	3±0.13	6.64±0.15	3.0±0.12	0.75246	57.47	76.37	4388.60
EFD4216	4	42.4+1.0	28+1.0	15±0.3	29±0.4	16±0.2	8.8±0.3	—	0.1691	71.535	423.04	30262.2