

Fig 1

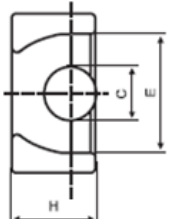
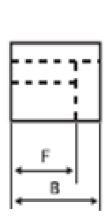


Fig 2

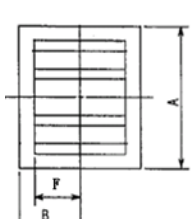
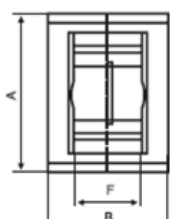


Fig 3

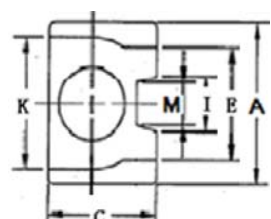
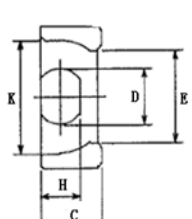


Fig 4

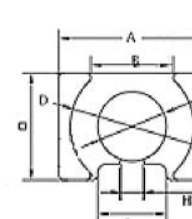
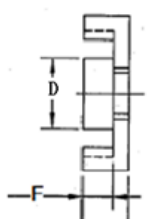


Fig 5

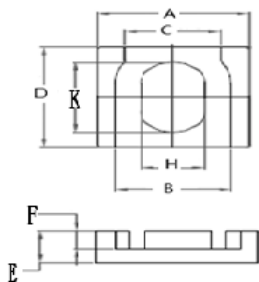
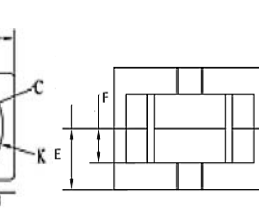


Fig 6

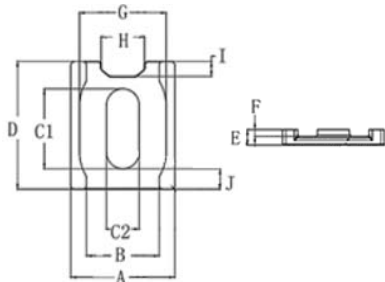


Fig 7

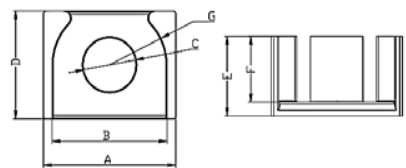


Fig 8

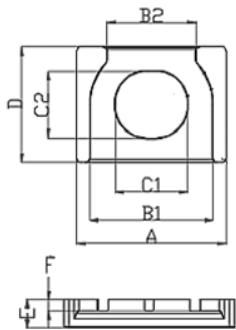


Fig 9

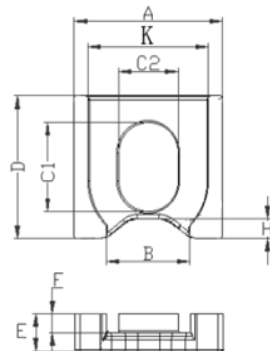


Fig 10

EPC型

尺寸Dim 型号 Type	图形 Fig.	A (mm)	B (mm)	C (mm)	D (mm)	E (mm)	F (mm)	H (mm)	K (mm)	M (mm)	I (mm)	C1 (mm ⁻¹)	Le (mm)	Ae (mm ²)	Ve (mm ³)
EPC7	2	9.40±0.4	7.50±0.2	3.40±0.2	—	7.20±0.4	5.00±0.4	5.90±0.3	—	—	—	5.2	16.50	3.17	52.28
EPC7.9	4	7.9±0.2	2.35±0.1	5.3±0.15	3.8±0.1	5.0±0.2	1.35±0.1	—	6.3±0.2	2.4±0.15	3.4±0.15	1.00	11.30	11.40	128.40
EPC10	1	10.2±0.3	4.05±0.15	3.40±0.15	5.00±0.1	5.10MIN	2.55MIN	1.90±0.1	7.60MIN	—	—	2.03	19.28	8.36	161.23
EPC10A	1	10.2±0.3	4.05±0.15	3.40±0.15	5.00±0.1	5.70MIN	2.55MIN	1.90±0.1	7.90MIN	—	—	2.18	18.73	8.61	161.27
EPC10/8	4	10±0.15	1.85±0.1	8.0±0.15	4.5±0.1	6.5±0.15	0.7±0.1	—	8.2±0.15	2.6±0.15	3.6±0.15	0.805	11.37	14.12	160.60
EPC12.3	4	12.3±0.2	2.4±0.1	9.04±0.15	5.6±0.15	8.6±0.2	1.05±0.1	—	10.0±0.2	3.0±0.2	4.0±0.2	5.915	1.48	0.25	0.37
EPC12.6	1	12.4±0.4	5.75±0.13	3.60±0.25	6.20±0.3	7.32±0.3	3.25±0.2	2.30±0.18	8.80±0.3	—	—	1.56	22.51	14.42	324.59
EPC13	1	13.2±0.25	6.60±0.20	4.60±0.15	5.60±0.15	8.30MIN	4.50±0.2	2.05±0.1	10.7±0.2	—	—	2.46	30.60	12.50	382.00
EPC13A	1	13.5±0.25	6.60±0.20	4.60±0.15	5.60±0.15	8.50MIN	4.50±0.2	2.05±0.1	11±0.2	—	—	2.55	31.08	12.18	378.55
EPC13C	1	13.3±0.4	6.60±0.20	4.40±0.15	5.60±0.15	9.0±0.3	4.70±0.2	2.05±0.1	10.7±0.2	—	—	2.26	29.91	11.69	349.65
EPC14.3	4	12.3±0.2	2.4±0.1	9.04±0.15	5.6±0.15	8.6±0.2	1.05±0.1	—	10.0±0.2	3.0±0.2	4.0±0.2	1.02	18.89	18.62	351.90

EPC14.5	1	14.5±0.3	7.40±0.20	6.60±0.15	7.00±0.15	10.1±0.25	5.50±0.15	3.20±0.1	12.3±0.3	—	—	1.97	24.38	12.39	301.97
EPC16	3	16.0+0.4/-0.2	7.35±0.15	7.55±0.15	6.6±0.1	10.5±0.2	5.725±0.2	4.9±0.1	12.9±0.2	—	—	1.31	37.40	28.60	1069.90
EPC16B (ERU16)	4	16.45±0.3	4.36±0.15	14.86±0.2	7.95±0.15	9.0±0.25	2.36±0.15	—	14.30±0.3	4.0±0.1	—	0.50	22.14	44.31	980.80
EPC17	1	17.5±0.3	8.55±0.20	6.00±0.15	7.70±0.15	12.0±0.5	6.05±0.2	2.80±0.1	14.5±0.3	—	—	1.78	40.20	22.80	917.00
EPC17B	1	17.4±0.2	8.1±0.15	7.0±0.15	7.55±0.15	11.7MIN	5.4±0.2	3.7±0.15	13.85MIN	—	—	1.76	40.20	26.70	917.00
EPC17C	1	18.3±0.3	8.4±0.15	6.7±0.2	8.25±0.15	13.6±0.2	5.35±0.15	4.3±0.15	14MIN	—	—	1.327	37.50	28.20	1059.80
EPC17C	1	18.3±0.3	8.4±0.15	6.7±0.2	8.25+0.1/-0.15	13.6±0.2	5.35±0.15	4.3+0.1/-0.15	14MIN	—	—	1.327	37.50	28.20	1059.80
EPC18	1	18.4±0.3	13.2±0.15	4.10±0.15	9.10±0.15	10.7MIN	10.3±0.15	2.65±0.1	13.1MIN	—	—	2.49	55.11	22.09	1217.38
EPC19	1	19.7±0.5	8.7±0.2	5.0±0.2	8.70±0.2	12.0MIN	6.5±0.2	2.80±0.2	8.5MIN	—	—	2.03	46.10	22.70	1047.00
EPC19B	1	19.1±0.5	9.8±0.2	6.0±0.20	8.50±0.2	13.15MIN	7.3±0.2	2.50±0.2	15.6MIN	—	—	2.26	49.38	21.89	1080.93
EPC19.6	1	19.6±0.4	12.34±0.25	4.12±0.1	10.02±0.15	14.5±0.35	9.25±0.2	2.03±0.1	15.75±0.35	—	—	2.95	52.33	17.70	926.24
EPC20	1	20.0±0.4	12.34±0.25	4.12±0.15	10.02±0.15	14.9±0.35	9.25±0.2	2.03±0.15	16.15±0.35	—	—	2.89	53.24	18.40	979.62
EPC20/5.6	3	20.0±0.5	12±0.25	5.6±0.15	9±0.15	12.55MIN	9.5±0.15	3.3±0.15	14.8MIN	—	—	1.871	53.78	28.75	1545.82
EPC23.5	10	23.5±0.4	13.3±0.4	13.9±0.2 9.5±0.15	22.1±0.3	5.8±0.1	2.9±0.15	3±0.15	19.1±0.4	—	—	0.301	33.96	112.68	3826.61
EPC25.1	1	25.1±0.5	16.5 MIN	13.6±0.25	6.5±0.2	11.43±0.15	8.78±0.15	2.5±0.15	20.4 MIN	—	—	1.562	51.99	33.29	1730.80
EPC25.2	8	25.2±0.5	21.9±0.45	10±0.3	20±0.35	12.5±0.20	10±0.20	—	—	—	—	0.687	64.34	93.63	6024.10
EPC25.5	1	25.5±0.5	12.5±0.2	8±0.2	11.5±0.2	17.5±0.4	9±0.2	4.1±0.15	22±0.4	—	—	1.327	56.68	42.70	2420.20
EPC26.8	3	26.8±0.68	7.25±0.15	6.6±0.25	9.36±0.3	20.62±0.65	4.75±0.25	3.6±0.2	22.55±0.68	—	—	1.295	42.05	32.45	1364.55
EPC26.9	8	26.9±0.65	22.5±0.65	11.5±0.25 22.5±0.2	19.3±0.5	8.3±0.15	4.9±0.2	—	—	—	—	0.386	45.30	117.47	5321.00
EPC30	7	30.0±0.35	21.0±0.35	9.5±0.15	36.0±0.5	4.42±0.1	2.1±0.15	12.5ref	—	—	4.25ref	0.225	40.19	178.39	7171.19
EPC32B	5	32.0±0.35	18.5MIN	14.8±0.2	23±0.3	12.5±0.25	7.25±0.25	5.5ref	27.05±0.35	—	4.25ref	0.2927	58.24	195.53	11388.76
EPC35	9	35.0±0.5	29.0±0.5 21.0±0.5	17.0±0.25 15.0±0.2	26.0±0.3	6.65±0.1	2.75±0.15	—	—	—	—	0.208	43.08	207.27	8928.43
EPC41	7	41±0.55	30±0.5	25±0.3 16.6±0.25	36.8±0.5	14±0.15	9.0±0.2	—	—	—	—	0.22	74.72	339.70	25404.80
EPC50	5	50.0±0.7	37.3±0.7	22.5±0.3	44.0±0.6	21.95±0.2	16.75±0.3	6.0ref	45.0±0.7	—	—	—	—	397.61	—
EPC55	9	55±0.7	36±0.7 40.2±0.7	28±0.4 16.2±0.3	28±0.5	23.5±0.2	16.1±0.3	—	—	—	—	0.29	102.38	355.38	36383.10