

Fig. 1

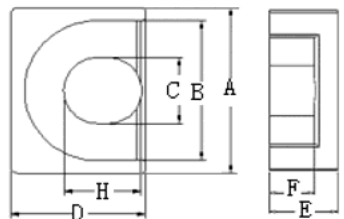


Fig. 2

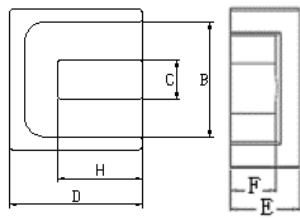


Fig. 3

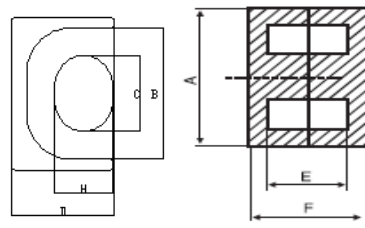


Fig. 4

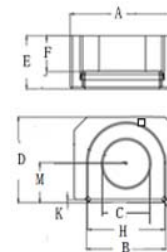


Fig. 6

EP型

尺寸Dim 型号 Type	图形 Fig.	A (mm)	B (mm)	C (mm)	D (mm)	E (mm)	F (mm)	H (mm)	C ₁ (mm ⁻¹)	Le (mm)	Ae (mm ²)	Ve (mm ³)
EP5	1	6.15-0.3	4.35+0.35	1.8-0.15	3.9-0.25	2.85±0.1	1.9+0.2	—	3.16	10.00	3.17	31.70
EP5-L	1	6±0.15	4.4±0.15	1.7±0.1	3.8±0.1	3.4±0.2	2.6±0.2	—	3.85	11.40	2.96	33.70
EP6.5	2	7.5-0.3	5.95+0.3	3.0±0.2	5.85±0.125	7.1±0.15	4.9±0.2	3.4±0.15	1.58	14.43	9.14	131.95
EOP6.7	2	6.7±0.2	5.2±0.2	2.3±0.1	6.2±0.2	5.9±0.25	4.3±0.2	4.0±0.2	1.03	8.05	7.76	62.48
EOP6.7B	2	6.7±0.15	5.2±0.2	2.3±0.1	6.2±0.15	2.95±0.1	2.2±0.1	4.0±0.1	1.03	8.05	7.76	62.48
EOP6.7C	2	6.7±0.2	5.2±0.2	2.3±0.1	6.5±0.2	2.95±0.1	2.2±0.1	4.0+0.18/-0.1	1.03	8.05	7.76	62.48
EP06.8	2	6.85±0.2	5.6±0.2	2.6±0.1	6.0±0.2	6.6±0.2	4.4±0.25	1.23±0.15	0.98	7.54	7.62	57.41
EP7	1	9.2±0.2	7.4±0.2	3.3±0.1	6.35±0.2	3.7±0.2	2.6±0.2	—	1.61	15.31	9.54	146.14
EP007	2	9.6-0.4	7.6+0.4	3.4-0.2	9.00-0.4	9.50-0.2	6.60+0.4	5.6±0.2	1.26	14.41	11.41	164.44
EP007-L	2	9.6-0.4	7.6+0.4	3.4-0.2	9.00-0.4	7.3±0.2	5.7±0.2	5.6±0.2	1.53	17.07	11.09	189.21
EPX7	2	7.3-0.4	5.2+0.4	2.6-0.2	6.10-0.4	7.3±0.2	5.7±0.2	3.7±0.2	1.77	16.20	9.10	147.72
EPX7B	2	7.3-0.4	5.2+0.4	2.6-0.2	6.5-0.4	9.50-0.4	6.60MIN	4.1±0.2	1.24	14.04	11.33	159.11
EPV7.3	3	7.3±0.2	5.7MIN	2.05±0.1	7.1±0.2	3.3±0.15	2.45+0.2/-0.1	4.5±0.15	0.61	15.49	25.2	390.5
EPV7.3B	3	7.3±0.2	5.75MIN	2.05±0.1	7.35±0.2	3.3±0.15	2.45+0.2/-0.1	4.5±0.15	0.61	15.49	25.21	390.5
EPX9	2	9.4-0.4	7.2MIN	3.4-0.2	9.0-0.4	9.50-0.4	6.60MIN	5.55±0.15	1.48	16.42	11.13	182.74
EP9.2	1	9.4+0.1/-0.5	7.2+0.4/-0	3.4+1/-0.2	6.5+0.1/-0.4	4.85±0.1	3.7+0.3/-0.1	—	1.78	18.90	10.60	200.00
EPX9.85	2	9.85±0.25	7.65±0.2	3.4+0/-0.2	9+0/-0.4	4.85+0/-0.2	3.38±0.2	5.5±0.2	0.93	18.57	19.92	369.99
EOP9.45	2	9.45±0.3	7.6MIN	3.65±0.15	7.1±0.2	3.6±0.15	2.5±0.15	4.0±0.13	1.48	16.42	11.13	182.74
EOP9.5	2	9.8±0.3	7.9MIN	3.2+0.05/-0.25	10.2+0.2-0.4	4.95±0.15	3.1+0.25/-0	6.7+0/-0.3	1.48	16.42	11.13	182.74
EOP10.15	4	10.15±0.15	11.8±0.1	5.0±0.15	11.7.0±0.15	9.2MIN	11.8±0.15	3.9±0.2	2.14	17.80	8.33	148.22

EOP10.5	2	10.5±0.15	8.75±0.15	4.7±0.15	7.0±0.15	6.6±0.1	5.35MIN	5.0±0.1	2.14	17.80	8.33	148.22
EP10	1	11.5±0.3	9.4±0.25	3.3±0.15	7.65±0.2	5.2±0.15	3.9±0.2	—	1.79	19.77	11.07	218.86
EP10B	1	11.5±0.3	9.4±0.25	3.3±0.15	7.75±0.2	5.75±0.15	4.35±0.2	—	1.88	21.05	11.18	235.54
EP10.5	5	10.5±0.2	8±0.2	8±0.2	8.45±0.2	5.25±0.1	3.55±0.15	7.8ref	0.96	21.07	22.01	463.94
EP10.5B	5	10.5±0.2	8±0.2	8±0.2	8.45±0.2	5.25±0.1	3.55±0.15	3.1ref	0.96	21.07	22.01	463.94
EP12.9	1	12.9±0.2	10.5MIN	4.9±0.1	8.55±0.3	6.2±0.15	8.34±0.15	—	1.57	17.45	11.05	193.03
EP13	1	12.65±0.4	9.8±0.6	4.2±0.3	8.8±0.3	6.5±0.15	4.25±0.2	—	1.66	34.56	20.88	721.50
EP13.3	1	13.3±0.2	11.2±0.35/-0.05	3.7±0.1	8.2±0.2	6.20±0.1	4.3±0.15	—	1.56	23.02	14.79	340.50
EP13.3B	1	13.3±0.2	11±0.1/-0.3	3.7±0.1	8.0±0.2	6.20±0.1	4.3±0.15	—	1.53	22.56	14.72	332.04
EP13.3C	1	13.3±0.2	11.1±0.25/-0.15	3.7±0.1	8.0±0.2	6.20±0.1	4.3±0.15	—	1.55	22.97	14.77	339.31
EP13.5	6	13.5±0.25	11.1±0.25	6.2±0.15	12.35±0.25	3.75±0.1	2.0±0.15	—	0.49	17.75	36.38	645.88
EP13.8	1	13.8±0.4	11.4±0.3	4.35±0.15	9.45±0.2	6.85±0.1	5.1±0.15	—	1.66	34.56	20.88	721.50
EPV7.3B	3	7.3±0.2	5.7MIN	2.05±0.10	7.35±0.2	3.3±0.15	2.45±0.2/-0.1	4.5±0.11	1.41	12.66	8.59	108.78
EPV12.8	3	12.8±0.3	10.6±0.3	4.9±0.15	9.5±0.2	6.4±0.1	4.65±0.15	5.2±0.15	0.58	21.50	37.00	800.00
EPV13	3	13.0±0.3	10.7±0.3	5±0.15	9.6±0.2	6.35±0.15	4.63±0.15	5.4±0.2	0.81	25.74	31.73	816.79
EPV13.8	3	13.8±0.3	11.6±0.3	5±0.15	9.6±0.2	6.85±0.15	5.13±0.15	5.4±0.15	1.15	28.43	24.70	702.22
EP17	1	18.0±0.25	12±0.3	5.7±0.15	10.5±0.2	8.4±0.2	5.7±0.3	—	1.89	23.68	12.55	297.08
EP17B	1	18.0±0.4	12±0.4	5.7±0.2	11±0.25	8.35±0.15	5.65±0.15	—	0.84	28.57	34.09	973.90
EP21.4	1	21.4±0.4	18.5±0.4	9.45±0.25	19.85±0.3	8.75±0.1	6.3±0.2	—	0.47	37.13	78.65	2920.52
EP23	1	23.0±0.4	18.6±0.4	12.0±0.2	20.8±0.4	9.95±0.25	6.95±0.2	—	0.34	42.36	125.49	5315.55
EP31C	1	31.1±0.4	25.4±0.4	14.8±0.2	29.9±0.4	9.6±0.15	5.6±0.2	—	0.22	43.12	197.09	8498.01