

Fig. 1

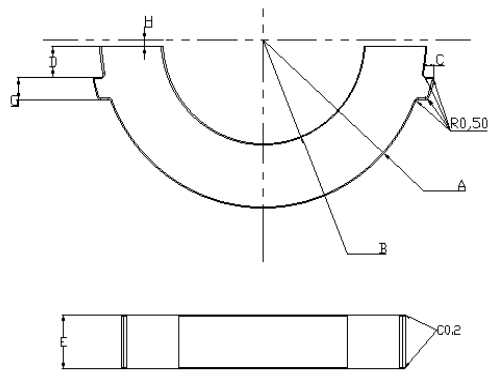


Fig. 2

半环

尺寸Dim 型号 Type	图形 Fig.	A (mm)	B (mm)	C (mm)	D (mm)	E (mm)	F (mm)	G (mm)	H (mm)	I (mm)	J (mm)	K (mm)
P52.2A	1	$R26.1 \pm 0.5$	$R16.1 \pm 0.5$	$6.25 + 0.4$	$14.1 - 0.6$	10 ± 0.25	8 ± 0.3	3.6 ± 0.2	$2.0 - 0.4$	$2.6 + 0.4$	—	—
P52.2B	2	$R26.1 \pm 0.5$	$R16.1 \pm 0.5$	1.8 ± 0.2	$4.8 + 0.3 / - 0.1$	10 ± 0.25	—	3.5 ± 0.2	1.0 ± 0.2	—	—	—