

Fig. 1

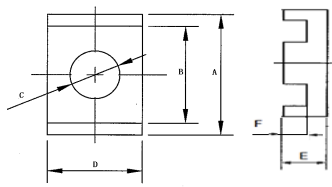


Fig. 2

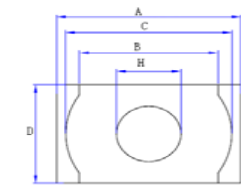


Fig. 3

EIR型

尺寸Dim 型号Type	图形 Fig.	A (mm)	B (mm)	C (mm)	D (mm)	E	F	H	M	N (mm)	K (mm)	O (mm)	Q (mm)	C ₁ (mm ⁻¹)	Le (mm)	Ae (mm ²)	Ve (mm ³)
EIR18	1	18.0±0.35	13.5MIN	15.6±0.3	9.7±0.2	4.75±0.1	3.2±0.1	6.2±0.15	18±0.35	9.7±0.2	1.55±0.1	—	—	0.59	18.13	30.48	552.6
EIR20/14	1	20.0±0.35	12.5MIN	18.0±0.35	14.0±0.3	7.3±0.15	5.1±0.15	8.8±0.15	20.0±0.35	14.0±0.3	2.3±0.1	—	—	0.43	25.57	59.96	1533.40
EIR20/15	2	20.0±0.35	15.8±0.35	8.0±0.2	15.0±0.3	7.0±0.15	5.0±0.15	—	20.0±0.35	15.0±0.3	2.0±0.1	—	—	0.44	25.73	59.00	1518.10
EIR20B/15	2	20.0±0.35	15.3±0.35	8.8±0.2	15.0±0.3	6.2±0.15	3.8±0.15	—	20.0±0.35	15.0±0.3	2.5±0.1	—	—	0.44	26.84	60.82	1842.80
EIR20B/15	2	20.0±0.2	15.3±0.2	8.8±0.2	15.0±0.3	6.7±0.15	4.6±0.15	—	20.0±0.2	15.0±0.3	2.1±0.15	—	—	0.58	33.98	58.89	2001.10
EIR25/19	2	25.4±0.5	20.0MIN	10.0±0.25	19.0±0.35	8.2±0.15	5.8±0.15	—	25.4±0.5	—	2.4±0.1	—	—	0.37	32.27	87.77	2831.90
EIR30.2	2	30.2±0.42	25.0±0.38	20.0±0.3	11.3±0.2	8.1±0.15	5.35±0.15	—	30.2±0.42	2.75±0.1	—	20.0±0.3	2.0±0.2	0.34	36.01	106.09	3820.40
EIR32.2	1	32.2±0.6	23.5MIN	29.0±0.5	23.0±0.3	8.0±0.15	5.2±0.25	13.0±0.3	32.2±0.6	23.0±0.3	2.8±0.15	—	—	0.25	34.26	136.37	4671.90
EIR34	1	34±0.5	24.12ref	30.92±0.5	21±0.3	9.2±0.1	6.6±0.15	12.36±0.2	34±0.5	21±0.3	2.6±0.1	—	—	0.35	40.02	114.39	4577.30
EIR40/25/14.7	1	40.0±0.5	30.0±0.5	36.0±0.5	25.0±0.35	12.0±0.15	9.3±0.15	14.0±0.25	40.0±0.5	25.0±0.35	2.7±0.1	—	—	0.33	49.43	147.89	7310.62
EIR40/25/14.7	3	40.0±0.5	30.0±0.5	36.0±0.5	25.0±0.35	12.0±0.15	9.3±0.15	14.0±0.25	40.0±0.5	25.0±0.35	2.7±0.1	—	—	0.33	49.43	147.89	7310.62