

Fig. 1

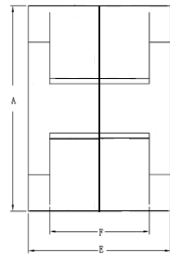


Fig. 2

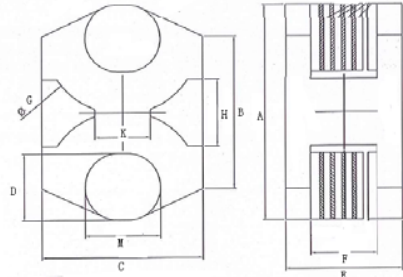


Fig. 3

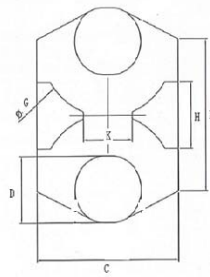


Fig. 4

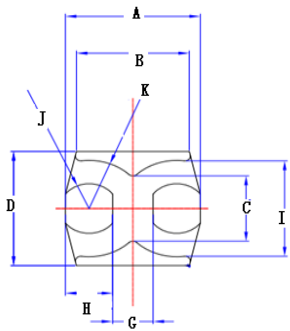
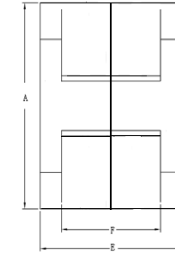
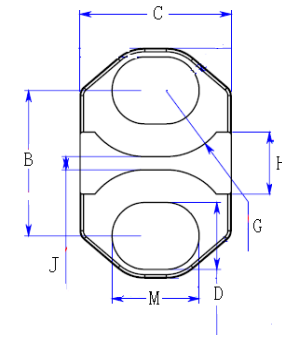
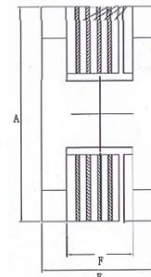


Fig. 5

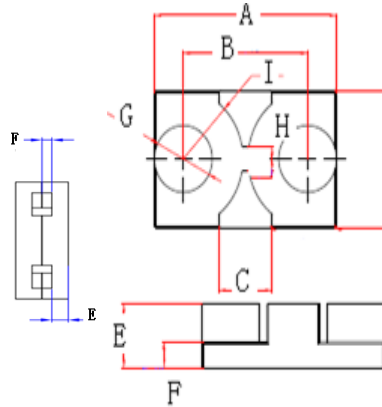


Fig. 6

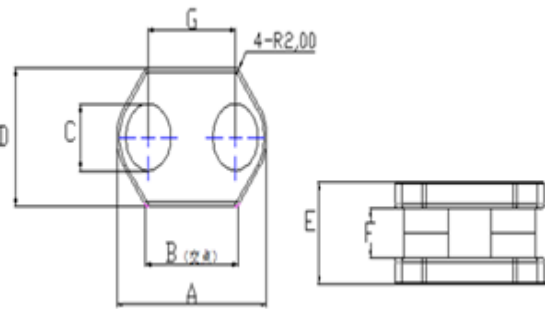
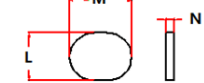
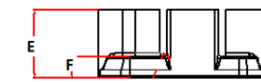
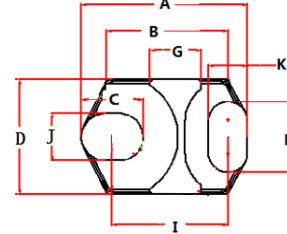


Fig. 7



13.5\*10.8R2磁柱



16\*8.5R2磁柱

Fig. 8

## EC型

型号Type	尺寸Dim 图形Fig.	A (mm)	B (mm)	C (mm)	D (mm)	E (mm)	F (mm)	G (mm)	H (mm)	J (mm)	K (mm)	I (mm)
EC24.6	5	24.6±0.4	20.6±.35	13.96±0.3	24.4±0.4	4.8±0.15	1.8±0.15	7.4±0.3	8.6±0.2	10.6±0.2	10.3±0.3	20.4±0.4
EC36.2	8	36.2±0.5	26.34REF	13.5±0.2	26.12±0.3	15.5±0.15	4.8±0.25	11.2±0.2	16±0.25	10.8±0.2	8.5±0.15	25.2±0.5
EC40	1	39.5±0.5	25.5±0.3	24.4±0.3	14.0±0.1	30.2±0.3	—	23.5±0.3	9.5±0.2	2.0ref	—	—
EC41.9	3	41.9±0.6	26.5±0.4	27.9±0.4	16.2±0.25	16.2±0.2	10.5±0.2	11.95±0.2	11.3±0.2	2.4±0.2	—	—
EC54.8	6	54.8±0.65	36.6±0.3	18.0±0.3	35.8±0.5	16.4±0.15	5.5±0.15	—	6.0ref	—	—	—
EC58	2	58±1.0	41±0.8	45.0±0.7	18.0±0.4	33.1±0.2	19.1±0.15	40ref	18.0±0.6	—	15.5±0.4	—
EC58.4B	7	58.4±0.7	36±ref	17.4+0.2/-0.3	35.80±0.5	26.5±0.2	12.9±0.3	34±0.3	—	—	—	—
EC50	4	50±0.6	36±0.3	36±0.2	16.0±0.15	33.0±0.2	21.0±0.15	34.0±0.2	16.0±0.2	—	12.0±0.15	—

EC54.8	6	54.80±0.7	37.40±0.3	16.00±0.3	35.80±0.5	16.35±0.15	6.70±0.25	17.40±0.3	6ref	—	—	17.9±0.3
EC64	2	64.0±0.6	46.5±0.3	48.0±0.3	20.0±0.2	35.0±0.2	20.0±0.15	44.0±0.2	20.0±0.2	—	18.5±0.2	—
EC75.2	3	75.2±0.8	49.6±0.7	48.3±0.7	25.6±0.4	44.9±0.2	23.7±0.3	24.0 REF	20.0±0.3	—	6.0±0.3	—
EC75.2	3	75.2±0.8	49.6±0.7	48.3±0.7	25.6±0.3	48.9±0.3	26.7±0.3	24.0 REF	20.0±0.3	—	6.0±0.3	—